

Bannockburn Citizens Association

Newsletter

Vol. 06, No.1

Bethesda, Maryland

March 2006

President's Column

Stuart Brown

Even though this has been a surprisingly mild winter, I began writing this column on a Saturday with snow falling steadily and I wondered if we would actually see the 8+ inches forecast for the Washington area. I finished writing on Sunday, with a good 12 inches of heavy wet snow blanketing the neighborhood, and our house having survived a glancing blow from the top half of a large beech tree that is now resting against our rear kitchen door and ground floor windows. Although we will miss this old friend, we were certainly luckier than the 100,000 or so Washingtonians who lost power in this storm. Diane and I are ready for spring.

There are only a few BCA activities to note during the past few months. Here is a brief summary:

-- The committee established at our December meeting to study how BCA should address the challenges posed by construction in the neighborhood has begun working, but has not yet had an opportunity to develop specific proposals for consideration by the community. We look forward to hearing from the committee in the near future. If you have any suggestions, please feel free to send your ideas to Sylvia Lowrance (Butry00@aol.com) or Doug Bonner (dgbonner@verizon.net).

-- Our January dues letter generated nearly 100 quick responses – giving BCA far more paid up members than we usually have this early in the year. As a reminder, according to our By-Laws, only dues paying neighbors are actually “members” of BCA, and only dues paying members are entitled to vote on issues presented to the membership. In the past, we have been very informal, and have welcomed everyone to participate in our discussions, without regard to membership status. However, in present circumstances, it seems appropriate to apply this membership requirement more strictly, especially as we consider serious issues such as guidelines for applying the Bannockburn covenants. So if you haven't yet paid your dues for 2006, please be sure you do so before the March 2 general meeting.

-- There is a new a bus stop shelter at the intersection of River Road and Nevis Road. I wish BCA could claim credit for this achievement, but in fact this shelter (along with many others) was installed under an agreement between Metro and a private company that sells advertising. Even though we didn't build it, I know that many individuals who live and work in our community will appreciate the benefits this shelter provides.

Bannockburn Citizens Association



**Welcome Spring!!
Annual Meeting
March 2nd
Concord School**

**Social & Refreshments: 7:30-8:00 PM
Business Meeting: 8:00 –9:00PM**

The relatively quiet of the past few months gives us an opportunity to think a little more broadly about positive steps BCA can take to make our neighborhood a better place to live. There are many avenues we could pursue, for example: one possibility would be to plan more social activities, such as block parties, picnics, and outings; another approach would be to organize neighborhood events such as community gardening and beautification days; a third type of activity would focus on promoting our Block Captain network to develop more active plans to deter crime and prepare for natural disasters.

These are only some possibilities; there are undoubtedly many others. But the key to making any of these possibilities a reality is to find a few neighbors who are willing to devote their time and energy to making it happen. BCA can provide great support (financial, organizational and communications) for many different kinds of efforts to improve our neighborhood. If you are interested in working on any of ideas just mentioned – or if you have other ideas of your own – please let us hear from you.

I look forward to seeing you at our next general meeting: Thursday, March 2, 2006, 7:30PM, at Concord School.

Stuart Brown President slb7110@comcast.net

Bannockburn Citizens Association

Newsletter

Vol. 06, No.1

Bethesda, Maryland

March 2006

Restoring Booze Creek Park Edith Wilson Miles

THE CABIN JOHN WATERSHED AND BOOZE CREEK: Our Bannockburn Community lies in the Cabin John Creek watershed. Cabin John Creek starts in Rockville and runs about 9 miles before discharging into the Potomac River. The Cabin John Stream Valley Trail (1) follows the creek and terminates in the Cabin John Local Park on Mac Arthur Blvd, which is just across the Cabin John Bridge from our neighborhood (see map). I wrote an article in the September 2005 BCA newsletter about hikes along this trail (2). The Cabin John watershed has an area of 26.5 square miles and contains many creeks, including Booze Creek, which flows through our neighborhood (see map). The lower part of Booze Creek runs through the grounds of Holton Arms School, under River Road, behind houses on one side of Helmsdale Road and Heatherhill Court, and under the Cabin John Pkwy. Booze Creek then joins Cabin John Creek and flows under the Cabin John Bridge and into the Potomac River between Glen Echo and Cabin John. I wrote a short article about Booze Creek Park in the December 2005 BCA newsletter.



THE PROBLEM: Cabin John Creek, Booze Creek, and other urban streams are threatened by urban development. An article in the November 27, 2005 Washington Post (3) calls attention to numerous problems with our streams. Uncontrolled storm water runoff from roads, parking lots, and buildings can erode stream banks, topple trees, and funnel in water laced with pollutants and silt. The pollutants and silt can harm fish and insects that use the stream as a

nursery for their young, which in turn feed larger fish, birds, and other animals. Storm water surges can also expose sewer pipes and other utilities and produce barriers to fish passage.

WHAT MONTGOMERY COUNTY IS DOING: The Montgomery County Department of Environmental Protection is designing a restoration project, located primarily on Maryland National Capital Park and Planning Commission property, for lower Booze Creek between River Road and Cabin John Parkway (4). The improvements include stabilizing the stream banks by integrating vegetation with rock and log features that are designed to deflect the erosive forces from the stream bank and create habitat for resident fish and insects. The project will also stabilize exposed sewer lines, eroded storm drain outfalls and remove some abandoned sewer pipes. The stream buffer along the project area will be planted with native tree and shrubs.

WHAT THE STATE IS DOING: The Maryland Department of the Environment has carried out a study of fecal bacteria in the Cabin John Creek Basin and has issued a report of the results and suggestions for lowering the contamination (5).

WHAT LOCAL ORGANIZATIONS AND WE CAN DO: Two local associations need our help in their work to preserve creeks in our area. The Friends of Cabin John Creek Watershed (FOCJCW) (6) is dedicated to promoting the health and beauty of the Cabin John Creek Watershed. Members carry out water monitoring, removal of trash and weeds, and education of members and government. The Audubon Naturalist Society (ANS) (7) carries out Environmental Education Programs including a water quality monitoring program. ANS provides free workshops and classes to prospective monitors.

(1) www.mc-mncppc.org/trails/trails_maps/cabin_john_svu.shtm.

(2) My article is available on the Bannockburn Community Association

(BCA) web (www.bannockburnweb.com/) in the September 2005 BCA newsletter and under Neighborhood Hikes”.

(3) www.washingtonpost.com/wp-dyn/content/article/2005/11/22/AR2005112202165.html

(4) Details of the project are available at:

Bannockburn Citizens Association Newsletter

Vol. 06, No.1

Bethesda, Maryland

March 2006

www.montgomerycountymd.gov/deptmpl.asp?url=/content/dep/restoration/bzcreek.asp

Or from Craig Carson, the watershed planner (240-777-7713)

(5)

www.montgomerycountymd.gov/content/dep/restoration/cj_execsum.pdf

(1-800-633-6101 x 3937)

(6) www.cabinjohn.org/focjcw/welcome.htm (301-320-9880)

(7) www.audubonnaturalist.org/ (301-652-5964)

Fairwell Neighbor

MJ Pates

A FOND FAREWELL TO A LONG TERM NEIGHBOR.

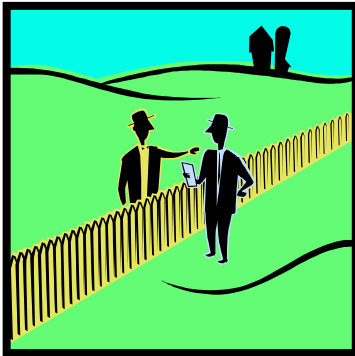
Lilly Pappas, a long time neighbor on Selkirk Drive is leaving us. She is going to live in Wisconsin near her daughter and son in law on the outskirts of the University of Wisconsin.

Lily has lived in Bannockburn for nearly 50 years and raised her son and daughter here, after her husband Nicholas passed away

She has been a loyal supporter of the BCA and a good friend and neighbor

SHE WILL BE MISSED.

GOOD BYE, LILLY. WE WISH YOU HEALTH AND HAPPINESS



Concord Park Report

Jo Roberts

"The construction start date was November 1, 2005. Construction will be completed in May, 2006. The park should reopen by June 1, 2006."

A recent site visit revealed that the site has been cleared and leveled and the old asphalt removed. The brush has been cleared from the perimeter of the park. To my delight, a mature maple tree is still standing in the vicinity of the new picnic area. Additional trees will be planted in the same location.

See you under the maple at the BCA picnic in the fall!

Trees near the Streets

Stuart Brown

BCA periodically is asked how neighbors can arrange for trimming or removal of trees that are growing along the road. The Montgomery County website (www.montgomerycountymd.gov) provides the following useful information and telephone numbers:

1) If you feel that a tree growing on a County maintained roadway is in need of trimming, contact the Division of Highway Services at 240-777-7623 to request an inspection.

2) If you feel that a tree growing on a State maintained road [a numbered road such as MD 190 – River Road] needs attention, you should contact the Maryland State Highway Administration field office at 301-948-2477.

3) Trees are also trimmed by the various utility companies, most commonly PEPCO, to minimize problems caused by branches rubbing on energized lines. This activity is

not regulated by Montgomery County. Questions regarding this type of trimming should be directed to the office of the State Forester at 301-854-6060.

4) Upon receipt of a request to trim a tree, an inspection order is generated. Unless an emergency situation is indicated, inspection of the request occurs the next time the Arborist does routine inspection in the neighborhood. Upon inspection, the work needed, if any, is prioritized based on its severity. Work that has the greatest potential to adversely affect public safety receives the highest priority. Work orders are



Bannockburn Citizens Association Newsletter

Vol. 06, No.1

Bethesda, Maryland

March 2006

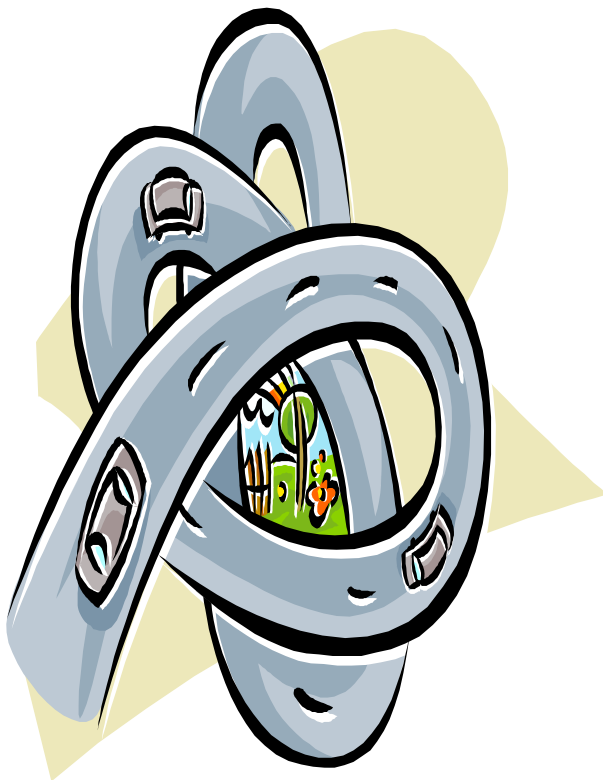
created following inspection, with those work orders having the highest priority being assigned to crews first.

Traffic Alert Selkirk at Wilson

Jo Roberts

An already dangerous traffic situation, at the intersection of Selkirk Drive and Wilson Lane, recently became more dangerous. In a recent storm, a power pole was knocked down at this intersection. PEPCO has replaced it with another pole. The new pole is placed closer to Wilson lane, and the old pole is still standing. The two poles together make visualization of the traffic coming down Wilson Lane from River Road difficult as one attempts to exit Selkirk Drive from the north side.

I called PEPCO and explained my concerns and requested that the old pole be removed. It would be helpful if other neighbors, who feel the same way about this situation, were to call PEPCO as follows: 1-877-737 2662. Then choose option "5" and "5" again to leave a message. Make it brief, as they only allow you "20 seconds" to get your message across!



DEVELOPMENT STANDARDS FOR R-200 ZONE

Reprinted for Community Information

Our community for the most part is zoned R-200. For the benefit of all concerned citizens we have listed here the dimensional and coverage criteria for the r-200 zone in Montgomery County. Ed.

ZONE	R-200 Residential, one-family, detached.
AREA REQUIREMENT	Minimum lot size 20,000 sq. ft.
MAXIMUM COVERAGE	25% including accessory buildings.
MINIMUM FRONT YARD SETBACK	40 ft. or established building line, whichever is greater. ^{1,2}
MINIMUM SIDE YARD SETBACK	Total 25 ft.; one side 12 ft. ¹
MINIMUM REAR YARD SETBACK	30 ft. ¹
MINIMUM LOT FRONTAGE	100 ft. at front building line. 25 ft. at street line.
MAXIMUM BUILDING HEIGHT	50 ft.
ACCESSORY BUILDINGS	Rear yard only. Occupy maximum 25% of rear yard. 65 ft. from front lot line. 12 ft. from side lot line. 7 ft. from rear lot line. 50 ft. maximum height.
REMARKS	¹ For corner lots see Code Interpretation/ Policy ZP0404-3. ² See Code Interpretation/Policy ZP 0404-2 (Established Building Line).

New Bus Stop River Rd at Nevis Rd

Doug Bonner

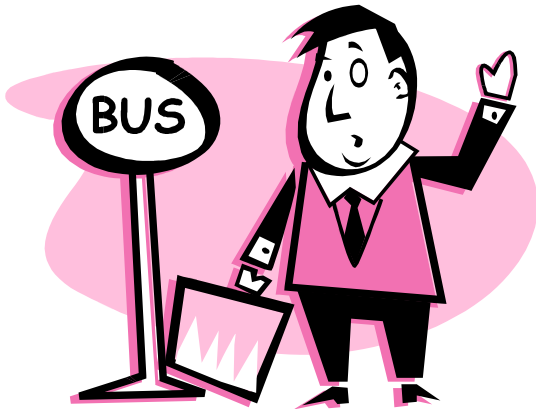
In January, 2006, the State Maryland of constructed a bus stop shelter on the southbound lane side of River Road near the Nevis Road intersection. Since bus service began on River Road, bus riders have had to brave the rain, sleet and snow waiting for sometimes unpredictable bus service on River Road heading to work or home in Washington. Now they can at least do so without getting wet, covered with snow or buffeted by the wind. Thanks to the efforts of the BCA, the sidewalk access to the bus shelter has also been improved. The BCA requested that State Highway Administration trim overgrown trees and vines blocking access to the bus shelter. SHA

Bannockburn Citizens Association Newsletter

Vol. 06, No.1

Bethesda, Maryland

March 2006



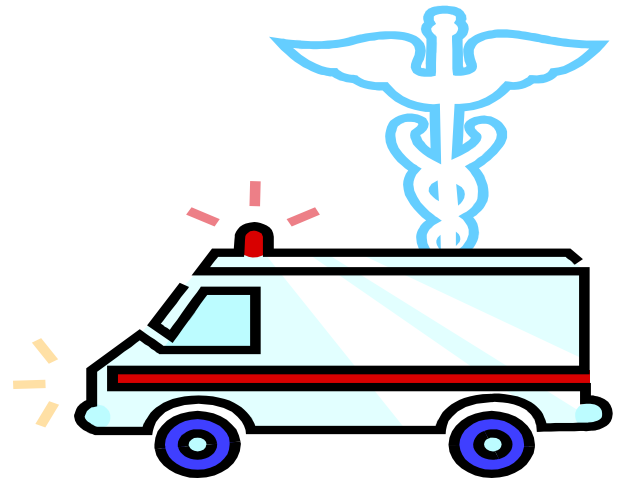
completed this work in mid-January shortly before the bus shelter construction was begun.

Want to know how to help beautify our neighborhood without paying a dime?

You can help in one very easy and demonstrable way. If you enjoy walking or jogging through Bannockburn, or walking your dog, pick up any recyclables you may see such as plastic bottles or aluminum cans and drop them in your blue recycling bin. It is amazing how regularly people carelessly drop bottles and cans in the roadway, on a grassy median, or even in front of homes in our neighborhood. If you spot any recyclables, please do yourself and your neighbors a big favor. Pick up the cans or bottles and drop them in your recycling bin. Until all people reform their littering behavior, we need to pick up after them to keep our neighborhood looking as it should. We need everyone's help with this, so please do your part!

Montgomery County Emergency Notification System

Did you know that Montgomery County has its own Department of Homeland Security? It does, and there is much useful information on its website. You can find its website easily through the general Montgomery County website (www.montgomerycountymd.gov). For example, you can download information about disaster preparations specifically tailored to address the needs of the elderly and people with disabilities. The Montgomery County Director of Homeland Security is Gordon Aoyagi; telephone: 240-777-2200; and email address: mchomelandsecurity@montgomerycountymd.gov



One of the very useful emergency services that the County provides is called “Alert Montgomery”. This service allows you to enroll to have email notifications about disasters sent to your home computer, cell phone, text pager or Blackberry or other wireless PDA device. This system is not only used for major disasters (that hopefully will occur only rarely) but also to announce the types of disruptions that we experience regularly (such as the closing of schools due to snow). Again you can sign up for this service through the Montgomery County Website – just look for the link to “Alert Montgomery.”

Montgomery County Offers Residents Emergency Alerts; Sign up to Receive Information by Email, Cell-phone, Blackberry, PDA or Pager

Montgomery County has activated a new emergency text alerting system that will provide timely Notification to individuals who live and work in the County about emergency incidents, severe weather threats, significant transportation disruptions or events and any changes in the threat level for terrorist attacks. Individuals who sign up for the service can select the ways they prefer to receive the text message alerts – by email, cell phone, Blackberry, PDA or pager.

Individuals can sign up for the free service by going to the Montgomery County website at www.montgomerycountymd.gov and clicking on “Alert Montgomery”.

Bannockburn Citizens Association

Newsletter

Vol. 06, No.1

Bethesda, Maryland

March 2006

BCA Residents Being Asked to Register for Emergency Emails

The recent hurricanes have highlighted the usefulness of cooperation and coordination in local neighborhoods. Our BCA block captain network has been serving for the past 1½ years as a means of communicating with Bannockburn residents. But in an emergency, direct access would be more efficient. At an October block captain meeting, Stuart Brown, BCA President, and Bonnie Garrett, Block Captain Coordinator, urged the block captains to encourage their neighbors to register on the Bannockburn website, www.Bannockburnweb.com, to receive important bulletins. The BCA Board could directly notify or warn everyone who is registered via a blanket email.

To register, go to www.Bannockburnweb.com and click on the "Log in" icon in the lower left corner. On the next page, you can click on the word "Register." You need not pay dues to register for these emails; however your support is solicited.

For those people who do not use a computer, please contact your block captain and arrange to obtain these bulletins by phone or some other means. The block captains serve as the nexus of communications between the BCA Board and the community. They can convey important information to you and supplement the blanket emails by the BCA board. If you cannot receive emails, you should call your block captain to make special arrangements in advance. We hope that everyone will be covered.

The current list of block captains is shown below. Please contact your captain if he or she has not yet been in touch with you or if your contact information has changed. The block captains maintain a list of contact information for all their neighbors. You can facilitate their job by reaching out to provide the information to them. If your block is not covered, please consider volunteering.

Call or email Bonnie Garrett at 229-8754 or Bonnie.Garrett2@verizon.net, and tell her you want to help out. Ed.

Block	Last name	First Name	Telephone	Email
Arandale	Noble	Diane	320-3554	diane.noble@comcast.net
Arran	Gross	Judy	229-3183	mjgross@erols.com
Barra Drive & Place	Sheehan	Riki & Michael	229-7786	catch22@bellatlantic.net
Ben Avon, River (7000)	Roberts	Jo	229-4281	joroberts@webtv.net
Blacklock Road	Lowrance / Garton	Sylvia / Randy	320-9601	butry00@aol.com
Broxburn Court	Mason	Sue & Dwight	320-9516	dnmason@juno.com
Broxburn Drive	Bernhard	Lise	229-0393	liseb@mindspring.com
Broxburn Drive	Koenig	Sally & Dutch	229-4821	askoenig@earthlink.net
Carmichael	Hollander /McCreery	Anne / Roger	229-7277	anne@mcCreery.org
Crail Drive	Shaya	Cecile	320-3597	clshaya@aol.com
Glenriddle, River (7000)	Pates	Mary Jane	229-3639	mjpatess@erols.com
Haddington	Bird	Geoffrey & Betsy	263-0331	betsy_bird@fanniema.com
Haddington	Duvall	Suzanne	229 9411	sgduvall1227@yahoo.com
Heatherhill Court	McMillan	Ann & Jim	320-4362	acm@capdale.com
Heatherhill Road	Hornstein	Sari	229-4271	sarihorn@aol.com
Helmsdale	Fitzgerald	Marilee	320-3320	MarileeFitzgerald@hotmail.com
Helmsdale	Masters	Tim	320-5046	timlori@comcast.net
Helmsdale	DiMeglio	Joanne & Jim	263-0266	jjmmdimeg@aol.com
Helmsdale	Gandal	Larry	320-7094	lgandal@srgpe.com
Hidden Creek	Winkler	Lauren & Tom	320-2180	llwinkler@comcast.net
Hidden Creek	Herman	Miriam	320-3067	starkherman@aol.com
Laverock	Zinner	John	229-3218	jzinner@erols.com
Loch Lomond	Sunshine	Ken	320-5577	ken.sunshine@verizon.net
Loch Lomond	Kahlenberg	Rebekah & Rick	320-8836	rkahlen2@aol.com
Nevis (7000-7200)	Miles	Edith	320-3299	EdithM@intra.niddk.nih.gov
Nevis (7300-7504)	Sorkin	Lisa	320-8732	ljsorkin@verizon.net
Nevis (7505 -)	Bonner	Doug	229-3296	dbonner@sonnenschein.com
Nevis (6900 -)	Dreier	Janice	229-2774	alexanderandjanice_dreier@yahoo.com
Orkney Pkwy	Malkin	Jocelyn	229-3195	drjmalkin@aol.com
River Road (7100)	Safchuk	Alexandra	320-0739	saf.ga@verizon.net
River Road (6500)	Alter	Judy	229-5467	ialter@aol.com
Selkirk (6900-7200)	Weiss	Sharon	229-4550	sharon.weiss2@verizon.net
Wilson (6900)	Nadol	Pauline	229-9856	jnadol@comcast.net
Wilson Lane (6800)	Dar	Barbara	229-7344	chretienb@sec.gov
Wilson Lane (7000)				

Bannockburn Citizens Association Newsletter

Vol. 06, No.1

Bethesda, Maryland

March 2006

Bannockburn Citizens Association Officers, Directors And Committee Chairpersons

President	Stuart Brown	229 8308	slb7110@comcast.net
Vice President	David Weiss	229 4550	dk.weiss@verizon.net
Secretary	Douglas Bonner	229 3296	dbonner@llgm.com
Treasurer	Anne O'Brien Peay	229 0077	anne.obrien@verizon.net
Director	Janice Dreier	229-2774	alexanderandjanice@yahoo.com
Director and Block Captain Ch	Bonnie Garrett	229 8754	bonnie.garrett2@verizon.net
Director	Maria Acebal	320 7734	mlacebal@alumni.duke.edu
Director and Traffic Ch	Sam Rogers	263-0261	rogerss@cbsradio.com
Director	Jocelyn Malkin	229-3195	drmalkin@aol.com
Noise Abatement Committee	Ken Rubin	229 7613	kennetharubin@aol.com
Social Activities Committee	Renee West	229 5691	Renee_west@knoll.com
Traffic Calming Committee	Marilee Fitzgerald	320-3320	Marilee.fitzgerald@osd.mil
New Neighbors Welcoming	Maria Acebal	320 7734	mlacebal@alumni.duke.edu
Street Lighting Committee	Sue & Dwight Mason		dnmason@juno.com
Noise Abatement Committee	Ken Rubin	229 7613	kennetharubin@aol.com
Web-Site and Newsletter	David Weiss	229-4550	dk.weiss@verizon.net
Meetings Coordination	Movita Hercules	229 2594	mherc@aol.com
Bannockburn Lore	Mary Jane Pates	229 3639	Mjp7504@verizon.net

..... cut here.....cut here....

Bannockburn Citizen's Association Membership Renewal

Calendar year 2006 \$ 30.00

Please mail to Anne Peay BCA Treasurer 7301 Nevis Road Bethesda, MD 20817

Or

Log on at www.bannockburnweb.com and renew using your credit card

Name.....Occupation or Work Description.....

Name.....Occupation or Work Description.....

Address..... Volunteer Interests.....

Telephone/Fax.....

E-mail.....

Additional Family or Household Occupants

Name..... Occupation or Work Description.....

Name..... Occupation or Work Description.....

Volunteer Interests: Circle one or more

Block Captain Assistant Block Captain BCA Committee Work BCA Directory Traffic Security

Landscape Gardening Community Representative County Government State Government

Suggestions or Community Comments.....

***Bannockburn Citizens Association
Newsletter***

Vol. 06, No.1

Bethesda, Maryland

March 2006

BCA's Web-Site

WWW.BANNOCKBURNWEB.COM

REGISTERVISIT OFTEN***RECEIVE NEIGHBORHOOD NEWS
E-MAIL BCA COMMITTEES**E-MAIL YOUR BOARD
CHECK OUT THE ARCHIVES***

Bannockburn Citizens Association

Neighborhood Meeting

Thursday, March 2nd

Concord School

Social and Refreshments 7:30 PM

Come Early and Coffee/Tea with Neighbors

Business Meeting 8:00 PM